

Supplementary Materials

Cuproptosis-related gene-based characterization and diagnostic biomarker screening in gliomas

Xi Shen[#], Jiandong Zhu[#], Yuhang Gu[#], Weiwei Zhai, Liang Sun, Jiang Wu, Zhengquan Yu

Department of Neurosurgery, The First Affiliated Hospital of Soochow University, Suzhou 215006, Jiangsu, China.

[#]Authors contributed equally.

Correspondence to: Prof. Zhengquan Yu and Dr. Jiandong Zhu, Department of Neurosurgery, The First Affiliated Hospital of Soochow University, Suzhou 215006, Jiangsu, China. E-mail: zhengquan.yu@neurosci.com.cn; jd.zhu@ccum.edu.pl

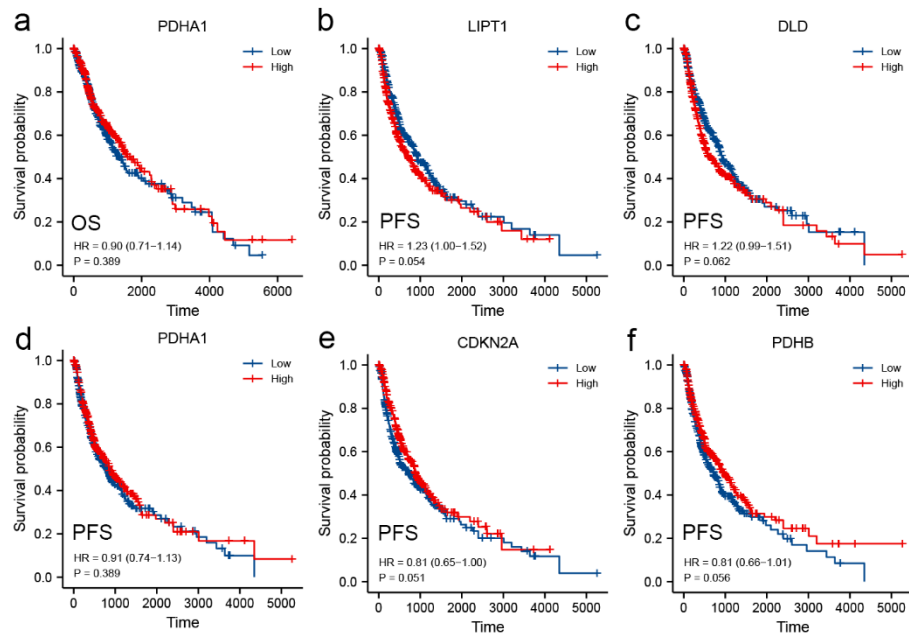


Figure S1. Clinical relevance of CRGs in the glioma patients. Kaplan-Meier plot for the expression of (a)PDHA1 and OS; and the expression of (b)LIPT1, (c)DLD, (d)PDHA, (e)CDKN2A and (f) PDHB and PFS.

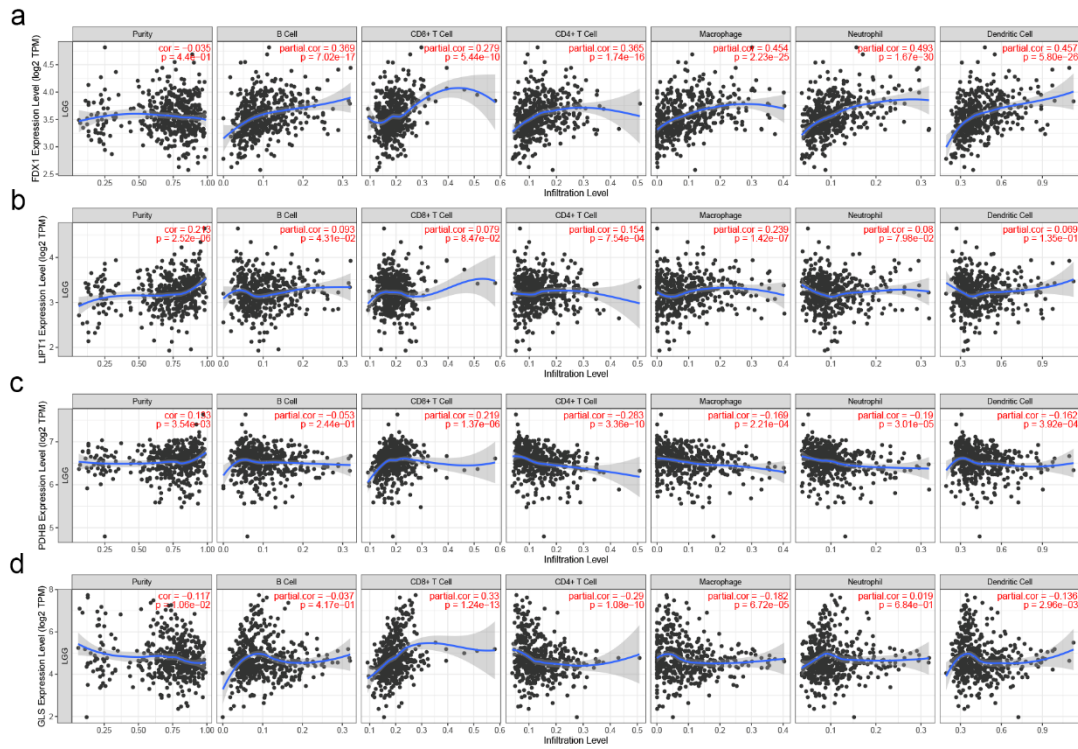


Figure S2. Correlation between (a) FDX1, (b) LIPT1, (c) PDHB, and (d) GLS expression and LGG immune infiltration in the TIMER database.